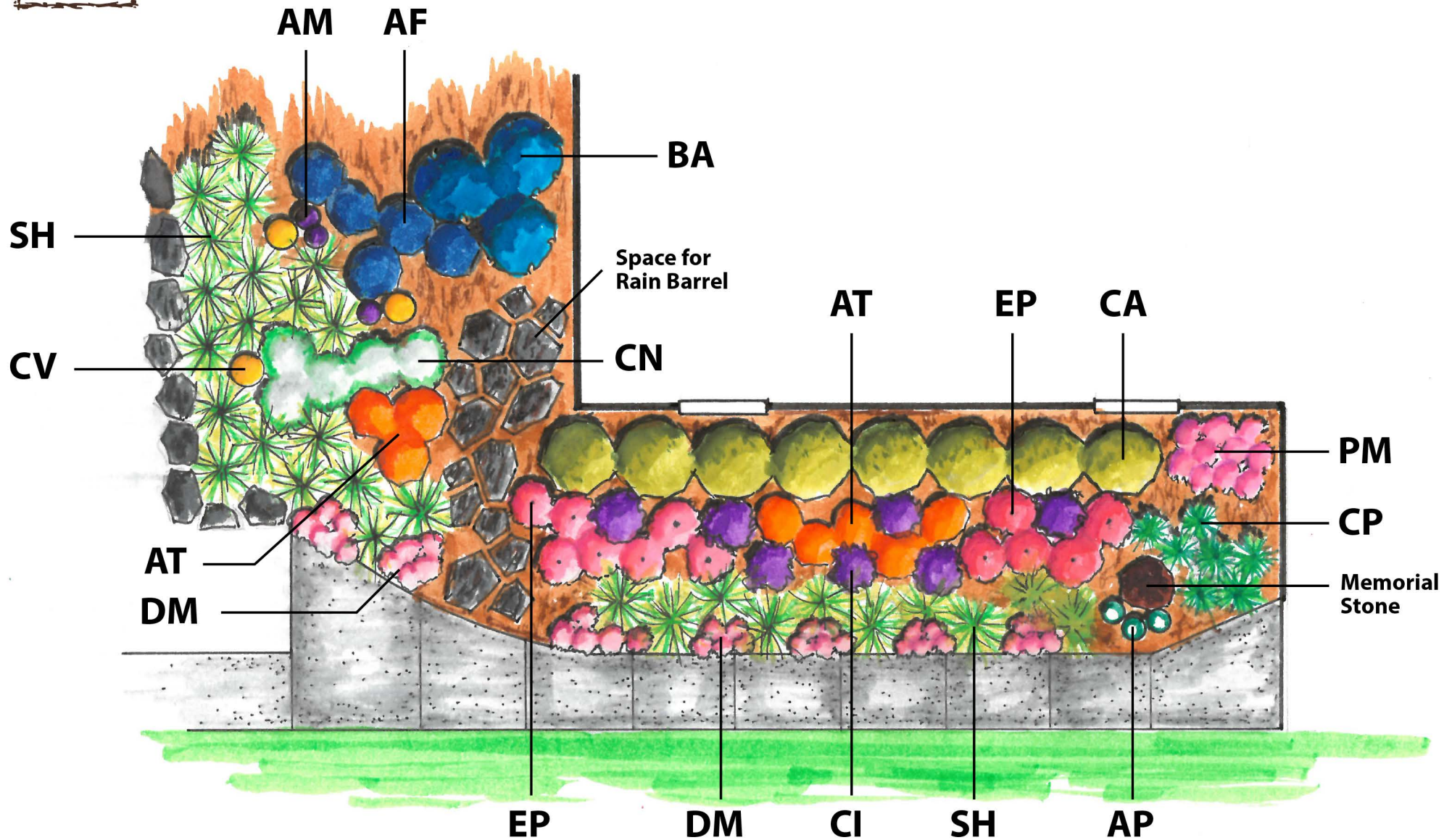




Garden Refresh Full Sun Garden



Plant List

These plants do well with medium soil moisture. Water as needed during dry spells.



AF - *Agastache foeniculum*

Anise Hyssop
Height: 24-36 inches
Width: 18-24 inches
Bloom Color: blue
Bloom Season: July-September



AM - *Allium 'Millenium'*

Millenium Onion
Height: 12-18 inches
Width: 8-12 inches
Bloom Color: purple
Bloom Season: April-June



AP - *Antennaria plantaginifolia*

Pussytoes
Height: 6-10 inches
Width: 12-24 inches
Bloom Color: white
Bloom Season: April-June



AT - *Asclepias tuberosa*

Butterfly Milkweed
Height: 24-36 inches
Width: 18-24 inches
Bloom Color: orange
Bloom Season: June-August



BA - *Baptisia australis*

Blue Wild Indigo
Height: 3-4 feet
Width: 3-4 feet
Bloom Color: blue
Bloom Season: April-May



CA - *Ceanothus americanus*

New Jersey Tea
Height: 3-4 feet
Width: 3-4 feet
Bloom Color: white
Bloom Season: June-July



CI - *Callirhoe involucrata*

Purple Poppy Mallow
Height: 8-12 inches
Width: 24-36 inches
Bloom Color: purple
Bloom Season: June-August



CN - *Calamintha nepeta ssp. nepeta*

Lesser Calamint
Height: 18-24 inches
Width: 18-24 inches
Bloom Color: white
Bloom Season: June-October



CP - *Carex pensylvanica*

Common Oak Sedge
Height: 8-12 inches
Width: 18-24 inches
Bloom Color: brown
Bloom Season: April-May



CV - *Coreopsis verticillata 'Golden Showers'*

Golden Showers Coreopsis
Height: 24-36 inches
Width: 18-24 inches
Bloom Color: gold
Bloom Season: June-October



DM - *Dodecatheon meadia*

Shooting Star
Height: 12-18 inches
Width: 6-8 inches
Bloom Color: pink
Bloom Season: April-June



EP - *Echinacea purpurea*

Purple Coneflower
Height: 2-5 feet
Width: 1.5-2 feet
Bloom Color: pinkish
Bloom Season: June-August



PM - *Phlox maculata*

Wild Sweet William
Height: 3 feet
Width: 12-18 inches
Bloom Color: pink
Bloom Season: June-August



SH - *Sporobolus heterolepis*

Prairie Dropseed
Height: 24-36 inches
Width: 24-36 inches
Bloom Color: brown
Bloom Season: August-September

Stormwater + Native Plants

Stormwater is a big challenge for urban and suburban neighborhoods. Stormwater tends to “run off” lawns and pavement instead of soaking into the ground. A heavy rainfall can cause flooding and contaminate local waterways when stormwater runoff picks up pollutants on the landscape and funnels them into storm drains.

Fortunately, native plants can help! Native plants have deep roots that infiltrate stormwater into the soil. In this way, a native plant garden reduces the amount of stormwater ending up in lawns, storm drains, and detention basins.



If you're adding native plants and practicing water conservation techniques at home, you may be eligible for certification through **Conservation@Home**, a program of The Conservation Foundation that recognizes homeowners who are creating environmentally-friendly yards.

Learn more at www.theconservationfoundation.org/conservation-home