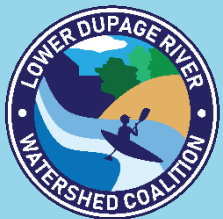


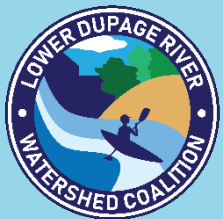
# Lower DuPage River Watershed Coalition

Member Meeting  
September 19, 2024



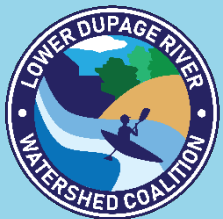
# Agenda

- Approve minutes
- DuPage River Restoration Project Update
- NARP Update
- Winter Best Practices Trainings
- Watershed Outreach



# Approve Meeting Minutes

- Motion to approve meeting minutes for the May 16, 2024 membership meeting

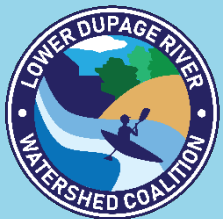


# River Restoration Project Highlights



# Why, What & How

- Current Conditions/Issues
- Habitat goals & practices
  - Riffles
  - Island
- Water flow
  - Stream barbs
  - More flow diversity supports more aquatic life
  - No impacts to high-flow conditions
- River side (riparian) habitat
  - Native vegetation
  - Invasive species removal – tree removal
  - Swale improvements for water quality



# Current Conditions



# Habitat Goals & Practices

Goal 1 – Improve instream habitat to increase biodiversity

- Two riffles to be installed upstream of pedestrian bridge
- Install root wads and brush box between stream barbs
- Enhance existing island with engineered log jam



# Riffles

Riffles attract and host a different community of fish and bugs than smooth flowing sections. They can also help increase dissolved oxygen.

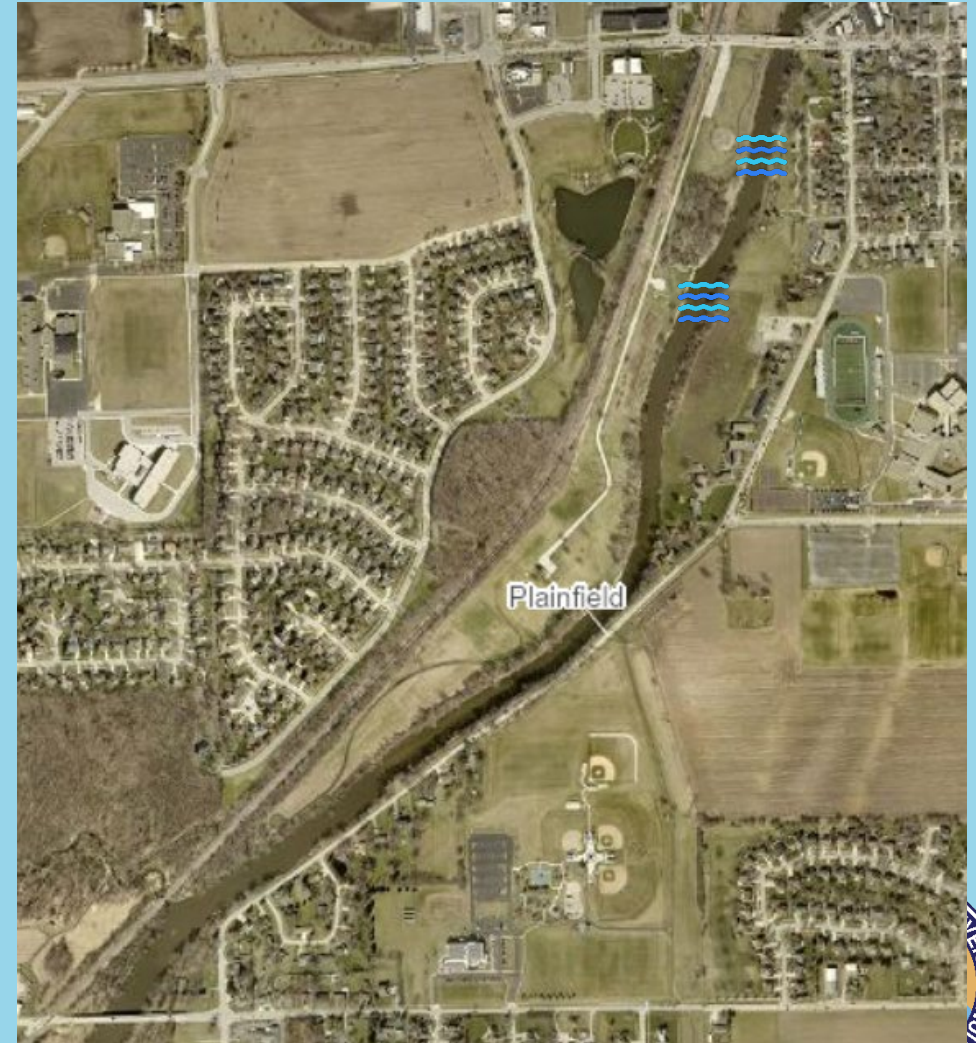
Examples of newly constructed riffles on Salt Creek in Oak Brook.





# Riffles

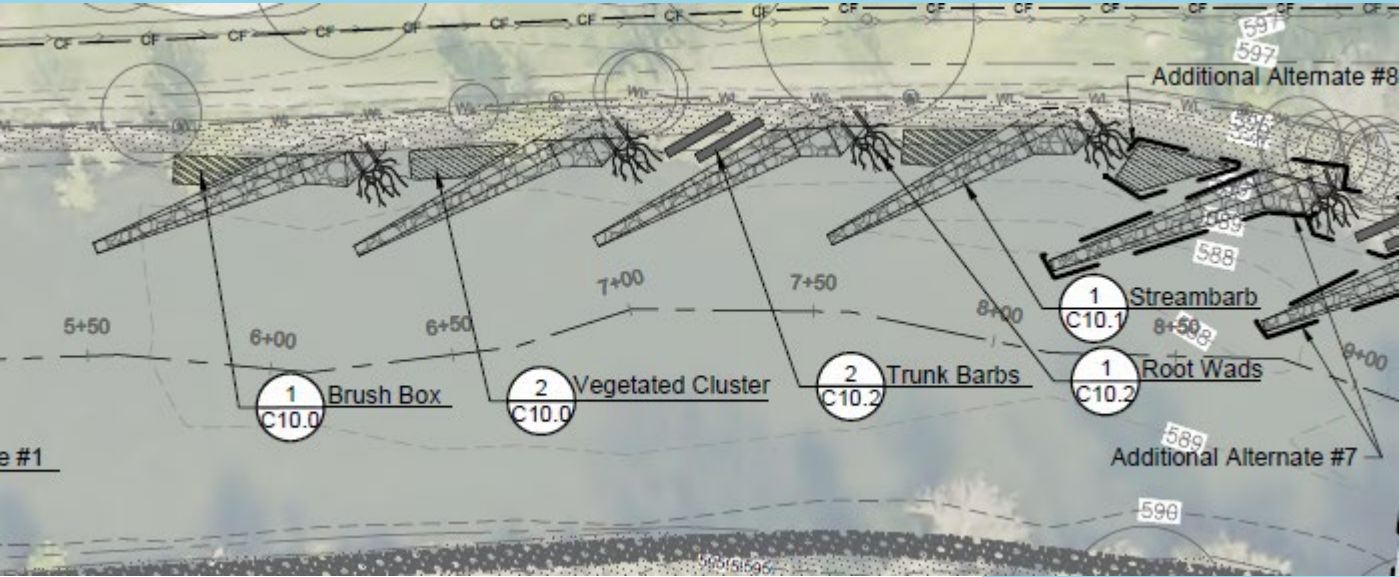
- Two riffles will be installed upstream of pedestrian bridge
- Exact location and alignment will be determined in the field
- They will be installed with kayak and canoes in mind
- Riffles will not impede water flow at high or flood conditions



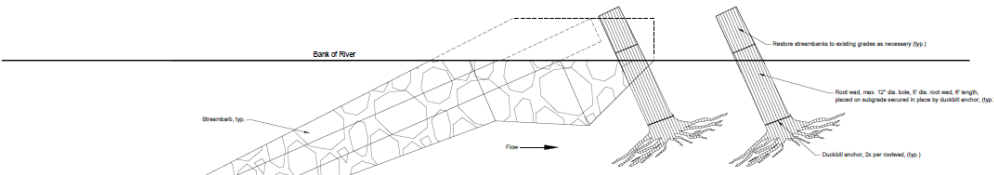
# Project Highlights



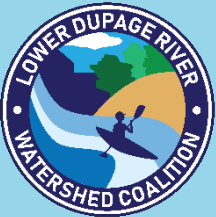
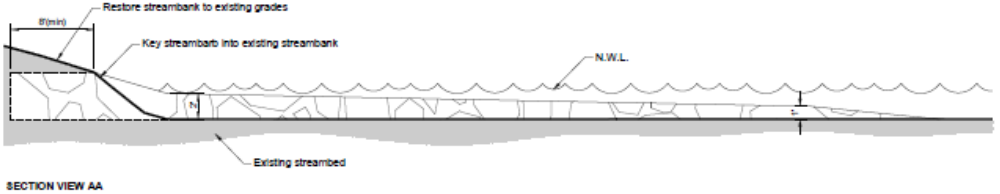
# Root Wads & Brush Box



Photos Credit: Hey and Associates, Inc.



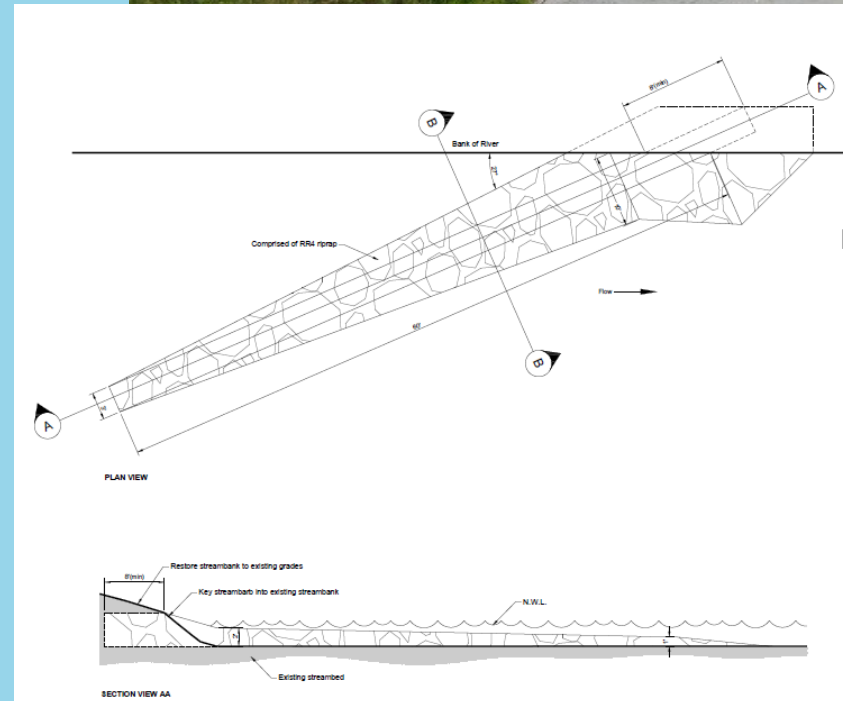
2 Root Wad Detail (Base Bid and Additional Alternate #6) (Not to Scale)



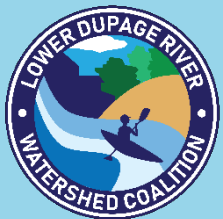
# Flow Goals & Practices

Goal 2 – Diversify flow patterns to increase biodiversity

- Stream barbs will be installed to direct flow to center of stream and create eddy/backwater areas



Photos Credit: Hey and Associates, Inc.

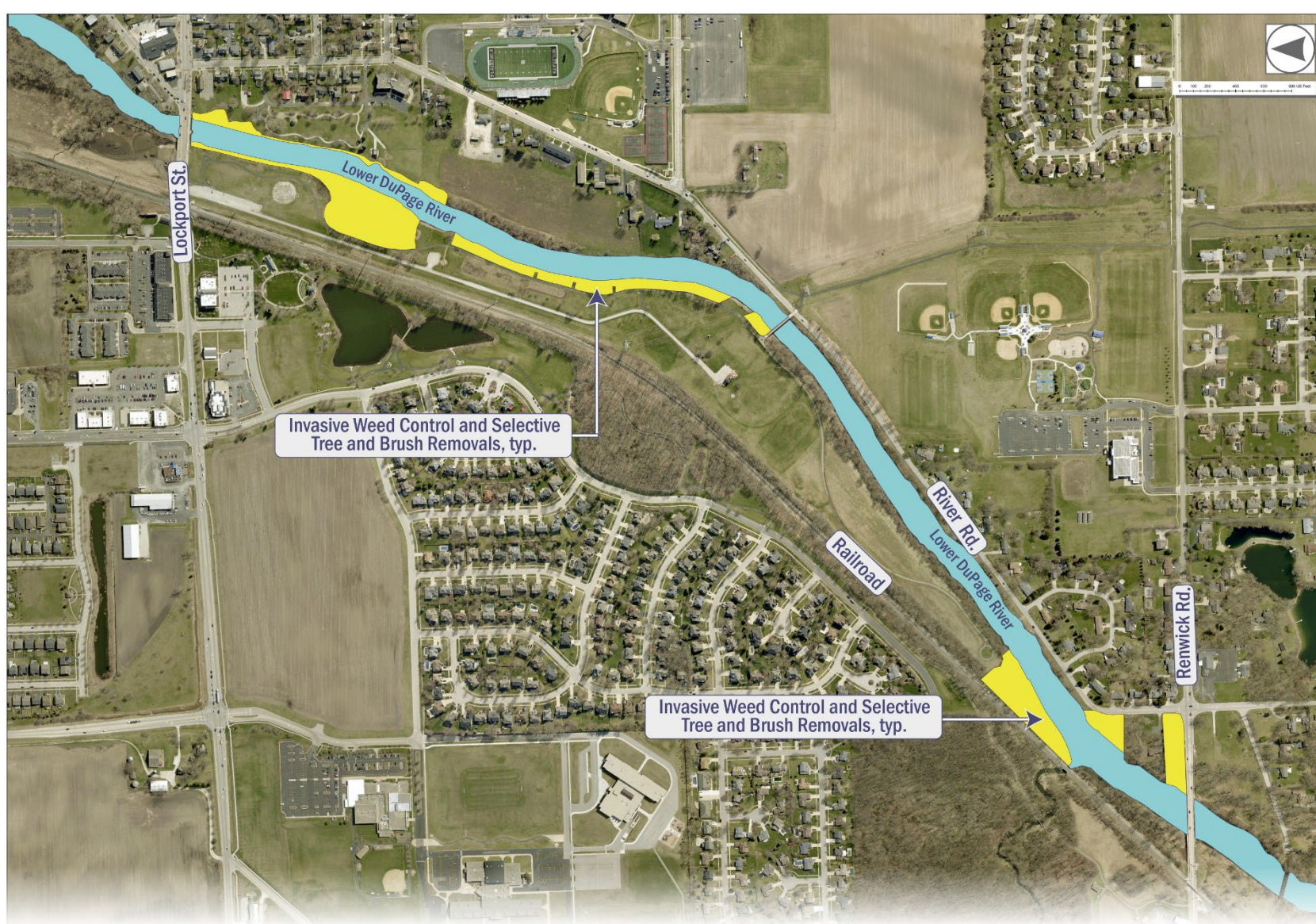


# Riparian Habitat Goals & Practices

Goal 3 – Improve riparian vegetation & habitat to improve biodiversity and reduce erosion

- Concrete wall will be removed and streambank will be re-graded and planted with deep-rooted native vegetation
- Invasive & weedy trees and shrubs will be removed along streambank
- Five swales will be regraded and vegetated where existing drainage comes into river
- Native vegetation will be used along most of the corridor





# Concrete Wall Removal & Restoration

Lower DuPage River - Failed Wall and Bank Stabilization



Existing Conditions



Proposed Conditions



# Streambank Vegetation

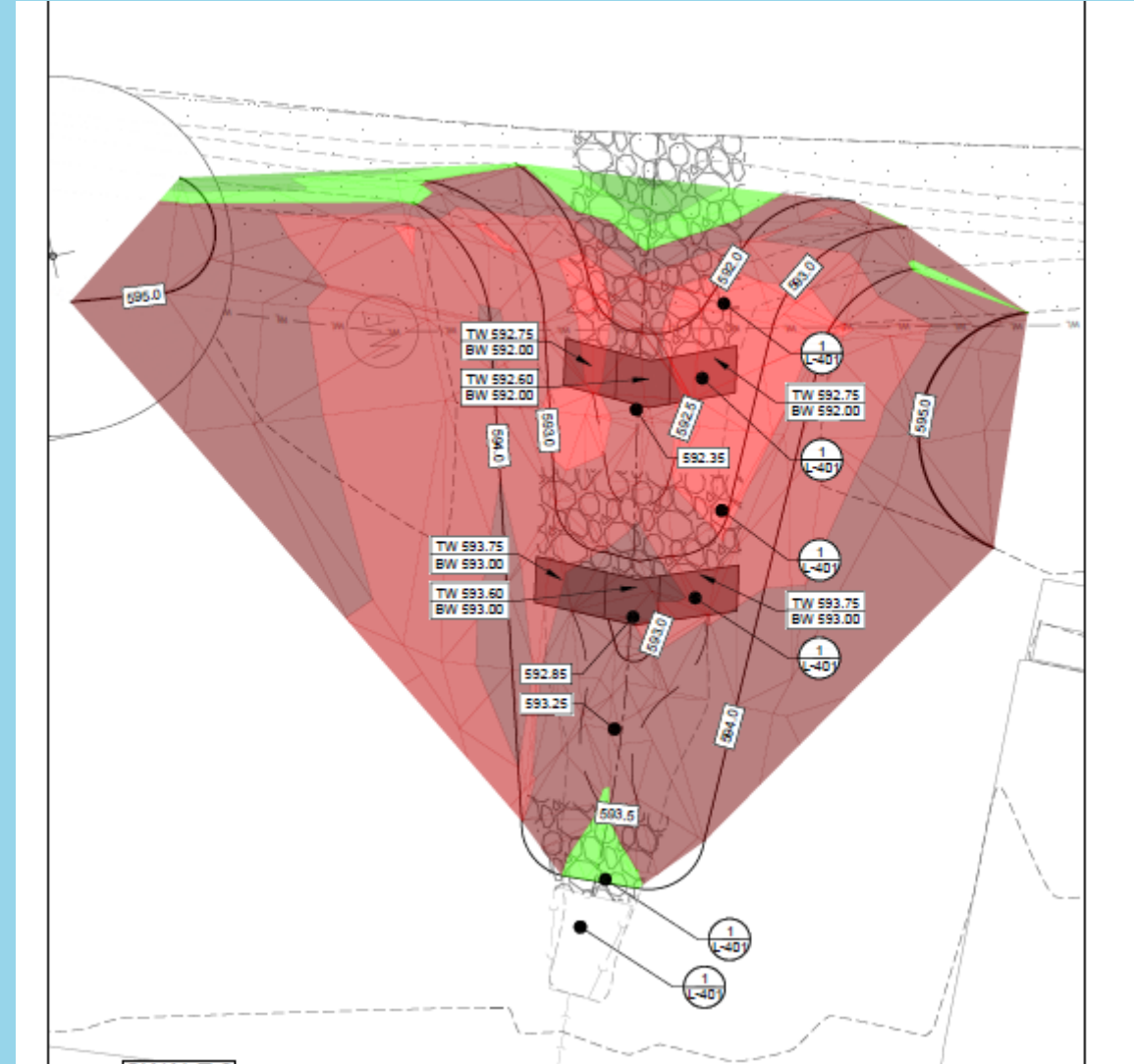
- Where invasive vegetation is removed and/or soil is regraded, native seeding & blanket will be used
- Trees and plugs will be planted in the spring
- Native vegetation along streams provides:
  - Habitat for adult stages of aquatic bugs like dragonflies and mayflies
  - Stabilizes soil and helps filter stormwater draining towards river





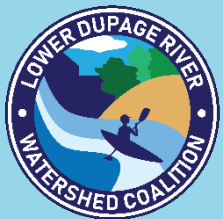
# Vegetated Swales

- 5 swales that drain water into the DuPage River will be excavated, shaped and planted with native vegetation to help slow down and clean-up stormwater before it enters the river.



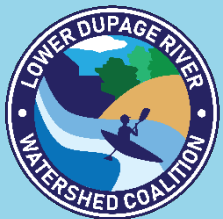
# What To Expect?

- This is a construction project that will result in restoring the habitats in and along the river.
- It will be messy and ugly this winter, but as the plants come in next summer things will green up quickly.
- Invasive, weedy trees and shrubs will be cut first, at the beginning of the project and new trees and plants will be the last thing completed.
- The park on both sides of the river will remain open throughout the project.



# What To Expect?

- The trail will remain open most of the time, but will need to be closed during certain phases of construction to keep people safe. Please follow signs as posted.
- Due to this project and other work along the 143<sup>rd</sup> Street bridge the river will be closed to recreation activities during construction due to safety concerns.
- A tour of the project will be planned for Summer 2025

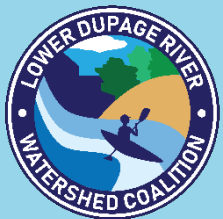


# Project Schedule

|   | September |  |   | October |   |   |   | November |   |   |   | December |   |   |   | January |   |   |   | February |   |   |   | March |   |   | April |   |   | May |   |   |   |  |  |   |
|---|-----------|--|---|---------|---|---|---|----------|---|---|---|----------|---|---|---|---------|---|---|---|----------|---|---|---|-------|---|---|-------|---|---|-----|---|---|---|--|--|---|
| Mobilization & Turf Treatment   |           |  | ■ | ■       | ■ | ■ | ■ | ■        | ■ | ■ | ■ | ■        | ■ | ■ | ■ | ■       | ■ | ■ | ■ | ■        | ■ | ■ | ■ | ■     |   |   |       |   |   |     |   |   |   |  |  |   |
| West Bank Clearing and Retaining Wall Disposal                                |           |  |   |         | ■ | ■ | ■ | ■        | ■ | ■ |   |          | ■ | ■ | ■ | ■       | ■ | ■ | ■ | ■        | ■ | ■ | ■ | ■     | ■ | ■ | ■     | ■ | ■ | ■   | ■ | ■ | ■ |  |  |   |
| Riffle No. 1 and Riverbank Seeding  |           |  |   |         |   |   |   |          |   | ■ |   |          |   |   |   |         |   |   |   |          |   |   |   |       |   |   |       |   |   |     |   |   |   |  |  |   |
| West Bank Stream Barbs, Root Wads, Brush Boxes, & Vegetated Clusters (Part 1) |           |  |   |         |   |   |   |          |   | ■ | ■ | ■        |   |   |   |         |   |   |   |          |   |   |   |       | ■ | ■ | ■     | ■ | ■ | ■   | ■ | ■ | ■ |  |  |   |
| Riffle No. 2 and Riverbank Seeding  |           |  |   |         |   |   |   |          |   |   |   |          |   | ■ |   |         |   |   |   |          |   |   |   |       |   |   |       |   |   |     |   |   |   |  |  |   |
| West Bank Stream Barbs, Root Wads, Brush Boxes, & Vegetated Clusters (Part 2) |           |  |   |         |   |   |   |          |   |   |   |          |   | ■ | ■ | ■       |   |   |   |          |   |   |   |       | ■ | ■ | ■     | ■ | ■ | ■   | ■ | ■ | ■ |  |  |   |
| Native Seeding of West Bank   |           |  |   |         |   |   |   |          |   |   |   |          |   |   |   |         |   |   | ■ | ■        |   |   |   |       |   |   |       |   |   |     |   |   |   |  |  |   |
| East Bank Mobilization  |           |  |   |         |   |   |   |          |   |   |   |          |   |   |   |         |   |   |   | ■        |   |   |   |       |   |   |       |   |   |     |   |   |   |  |  |   |
| East Bank Stream Barbs, Root Wads, Brush Boxes, & Vegetated Clusters          |           |  |   |         |   |   |   |          |   |   |   |          |   |   |   |         |   |   |   |          |   |   | ■ | ■     | ■ |   |       |   |   |     |   |   |   |  |  |   |
| Native Seeding of East Bank   |           |  |   |         |   |   |   |          |   |   |   |          |   |   |   |         |   |   |   |          |   |   | ■ | ■     | ■ |   |       |   |   |     |   |   |   |  |  |   |
| Tree & Plug Planting  |           |  |   |         |   |   |   |          |   |   |   |          |   |   |   |         |   |   |   |          |   |   |   |       |   |   |       |   |   |     | ■ | ■ | ■ |  |  |   |
| Punch List  |           |  |   |         |   |   |   |          |   |   |   |          |   |   |   |         |   |   |   |          |   |   |   |       |   |   |       |   |   |     |   |   |   |  |  | ■ |



# NIP/NARP Updates



# Winter Best Practices Workshops

- 2 remaining in-person and 2 virtual roads workshops remaining
- 1 in-person & 1 virtual parking lots & sidewalks workshops
- \$10 Discount for each registration for members use CHLORIDE coupon code
- Program meets Annual Training requirements



## 2024 In-Person & Virtual Winter Best Practices Workshops

Registration available at [SaltSmart.org](https://saltsmart.org)

Hosted By:



### Public Roads

All workshops 8am-12pm

September 17—Aurora

September 24—Libertyville

October 3—Homewood

October 8—Virtual

October 15—Virtual

**Public Roads**—A new Public Roads Training is being offered this year featuring innovative, local practices. The training was created with input from local public works and county DOT staff to provide an overview of current and next level practices to meet annual training needs.

Outreach Partners:



### Salt Smart Certified Parking Lots & Sidewalks

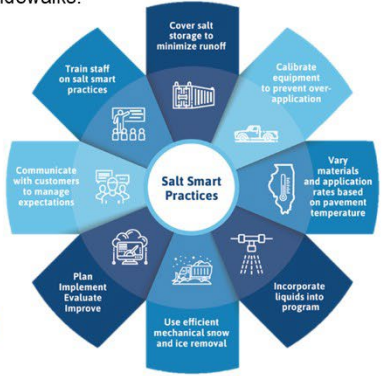


All workshops 8am-12pm

September 26—Virtual

October 1—Streamwood

**Salt Smart Certified Parking Lots & Sidewalks**— Training is geared towards private contractors and public agencies with a local focus on industry-accepted best practices for parking lots and sidewalks.



# Seasonal Outreach Materials – Fall



## Why Stream Restoration Matters: Reviving Our Local Waterways

Discover how stream restoration techniques create healthier, more resilient waterways in our local communities.

[READ MORE »](#)



## The Impact of Nutrients in River Ecosystems

Learn how excess nutrients impact river ecosystems and discover actionable ways to help prevent water pollution and protect aquatic life.

[READ MORE »](#)



## Invasive Fish Alert: How the Round Goby Threatens Illinois Rivers

The round goby is an invasive fish that's rapidly spreading through Illinois waterways. Anglers can take action to protect local streams.

[READ MORE »](#)

## New Material Topics:

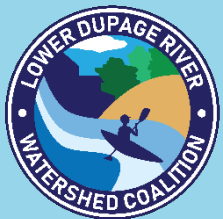
- Stream restoration
- Nutrients
- Invasive Round Goby

## Other Fall Topics:

- Fall leaves
- Pool draining
- Pet waste

Find outreach materials:

[www.LDPwatersheds.org/outreach](http://www.LDPwatersheds.org/outreach)



# Fall Materials

## Social Media Posts



**NUTRIENT POLLUTION IS A PROBLEM IN LOCAL WATERWAYS**

Here are three actions you can do at home to prevent nutrients from washing off your property:

- **Manage fall leaves:** keep leaves off the street and sidewalk by mulching them into your yard with a mower, composting them, or preparing them for community leaf collection
- **Apply fertilizer appropriately:** avoid applying if rain is in the forecast, follow instructions on the label, and be careful to not over apply.
- **Garden with native plants:** their deep roots stabilize the soil and soak up excess rainwater.



**STREAMBANK STABILIZATION FOR HEALTHIER RIVERS**

Restoration projects that use native plantings and rootwads to stabilize streambanks protect water quality and create a better home for wildlife.



**INVASIVE FISH ALERT**



Round Goby, *Neogobius melanostomus*

Illinois waterways are under threat from the invasive round goby, a fish that reproduces quickly and eats native fish eggs.



Find outreach materials:

[www.LDPwatersheds.org/outreach](http://www.LDPwatersheds.org/outreach)





# Past Fall Materials

## Graphics/Posters

We have a selection of materials on managing fall leaves!

**WHERE YOU LEAVE YOUR LEAVES MATTERS!**

Leaves fall to the ground, creating large amounts of organic debris.

This causes 2 problems:

- 1 Leaves raked into streets clog storm drains and cause local flooding.
- 2 Too many leaves add excess nutrients into streams.

Decaying leaves feed algae. An overgrowth of algae... kills fish. makes our water green and stink.

**What can you do with your leaves?**

- Participate in your community's leaf collection program.
- Fertilize your lawn naturally—mulch leaves with a lawn mower.
- Compost leaves to use in the garden.
- Keep streets and storm drains clear of leaves.

Created by The Conservation Foundation for the Lower DuPage River Watershed Coalition and the Lower Des Plaines Watershed Group.

**DONDE DEJAS TUS HOJAS IMPORTA!**

Las hojas se caen al suelo creando grandes cantidades de escombros orgánicos.

Esto causa dos problemas:

- 1 Las hojas que son desechadas en la calle pueden obstruir el desagüe y causar inundaciones locales.
- 2 Muchas hojas agregan un exceso de nutrientes a los ríos.

Hojas en descomposición alimentan algas. Un crecimiento excesivo de algas... mata a los pescados. convierte nuestra agua verde y huele mal.

**¿Que puedes hacer con tus hojas?**

- Participar en el programa de recolección de hojas de su comunidad.
- Fertilizar su pasto naturalmente—triturar sus hojas con su cortacésped.
- Compostar las hojas para usar en su jardín.
- Mantener las calles y el desagüe libre de hojas.

Creado por The Conservation Foundation para el Lower DuPage River Watershed Coalition y el Lower Des Plaines Watershed Group.

**PROTECT HABITAT AND WATER QUALITY  
NO DUMPING YARD WASTE**

Illustration of a person dumping yard waste into a stream, with a heron and fish nearby.

Created by The Conservation Foundation for the Lower DuPage River Watershed Coalition and the Lower Des Plaines Watershed Group.



Spanish version

# Salt Smart and You Library Exhibit

## Reserve the Salt Smart and You Library Exhibit



- 8 pop-up displays
- English and Spanish panels
- Raise awareness and inspire Smart Salting

Reserved:  
December 7 - December 21

Reserve the exhibit:  
[www.LDPwatersheds.org/exhibit](http://www.LDPwatersheds.org/exhibit)



# Like Us on Facebook and Share Posts

**Lower DuPage River Watershed Coalition**  
551 likes · 572 followers

Liked Message Search

Posts About Mentions Reviews Followers Photos More

### Intro

The Lower DuPage River Watershed Coalition is a 501c(3) non-profit organization. We provide local coordination to address water resource concerns based on science. Our analyses of habitat, biological and chemical data identifies stressors to aquatic life.

Page · Environmental Conservation Organization  
Naperville, IL, United States, Illinois  
(630) 428-4500  
ldpwatersheds.org  
Not yet rated (1 Review)

### Posts

Lower DuPage River Watershed Coalition  
August 19 at 4:03 PM · 🌐

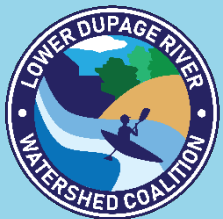
The virtual 2024 Midwest Beaver Summit is coming up next week! Learn about the benefits of beavers for our watersheds and how we can coexist with them.

Don't miss it! Register for your free ticket at <https://www.eventbrite.com/.../2024-midwest-beaver-summit...>

#beavers #beaverbeliever #MidwestBeaverSummit #coexist #wetlands #wildlife #ecologicalrestoration #water #webinar

### Photos

See all photos



# Ideas? Needs?

For questions or to customize materials:

Lea Rodbarry,

Watershed Communications Specialist

[lrodbarry@theconservationfoundation.org](mailto:lrodbarry@theconservationfoundation.org)



# Lower DuPage Contacts

Doug Kissel, President

Village of Plainfield [dkissel@goplainfield.com](mailto:dkissel@goplainfield.com)

Jennifer Hammer

[jhammer@theconservationfoundation.org](mailto:jhammer@theconservationfoundation.org)

Lea Rodbarry

[lrodbarry@theconservationfoundation.org](mailto:lrodbarry@theconservationfoundation.org)

